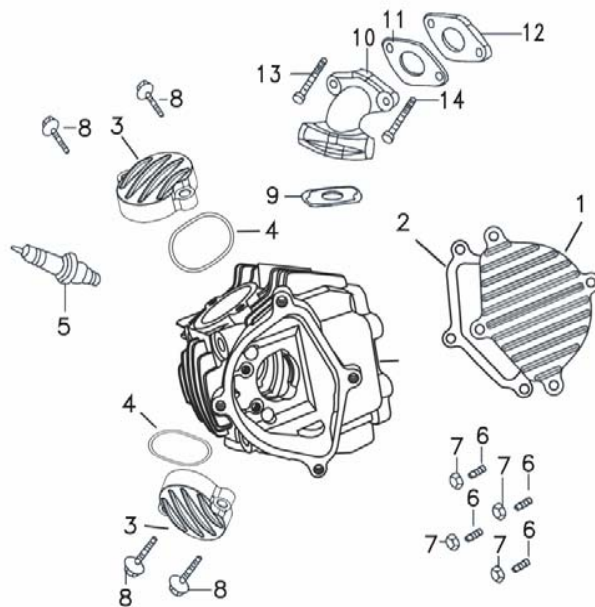
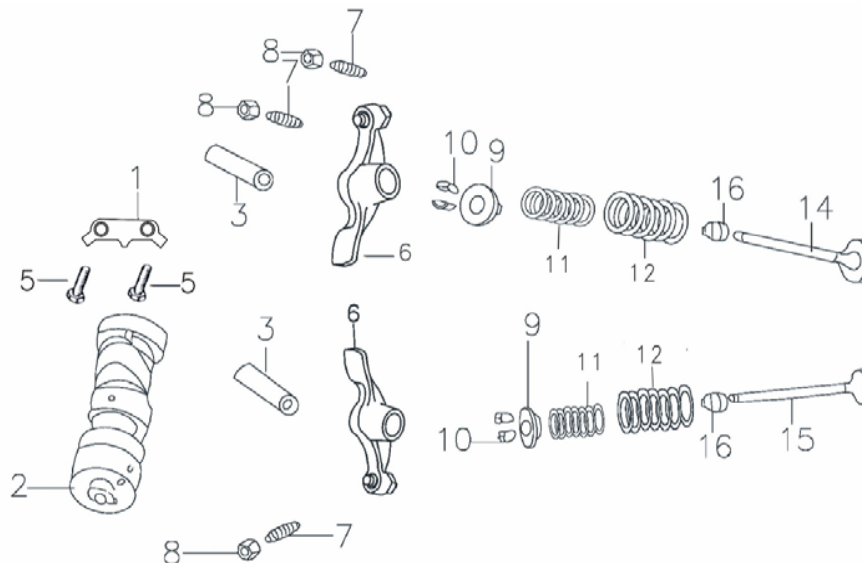


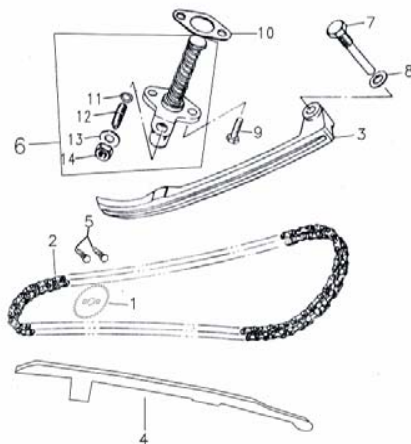
序号 Ref. No.	零部件编码 Part No.	零部件名称	Description	数量 Quantity	备注 Remark
1	2101A038	气缸体	CYLINDER BODY	1	
2	2101B010	气缸体密封垫	CYLINDER BODY SEAL PACKING	1	
3	2102A000	气缸头组件	CYLINDER HEAD ASSY	1	
4	210-1-4	进气门导管	SUCTION-VALVE PIPE	1	
5	210-1-5	排气门导管	EXHAUST VALVE PIPE	1	
6	210B008	气缸头密封垫	CYLINDER HEAD SEAL GASKET	1	
7	97010014	定位销 10×14	ASSEMBLING PIN 10×14	4	
8	208M036	双头螺栓M6×38	BOLT M6×38	2	
9	210-1-9	螺栓	BOLT	2	
10	210-1-10	O型密封圈	O SHAPED SEAL RING	2	
11	210E030	油道管	OIL PIPE	1	



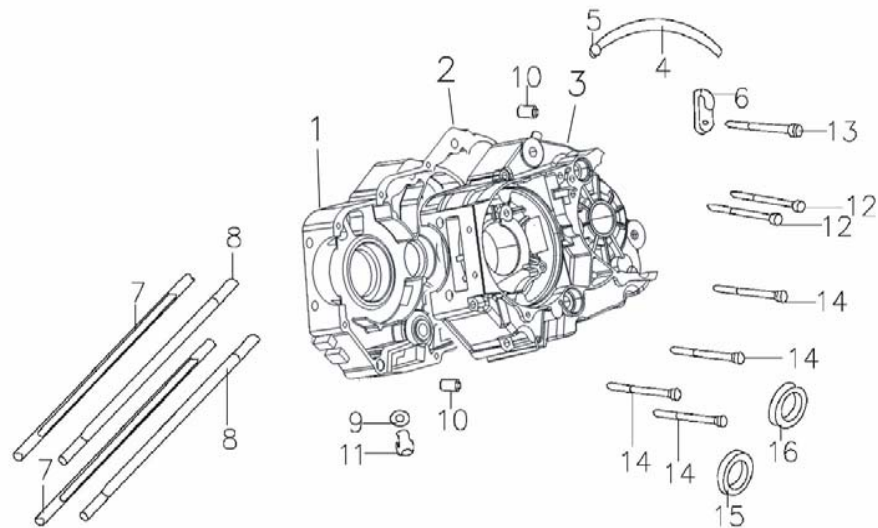
序号 Ref. No.	零部件编码 Part No.	零部件名称	Description	数量 Quantity	备注 Remark
1	210A033	气缸头左盖	CYLINDER HEAD LEFT COVER	1	
2	2102B006	气缸头左盖密封圈	CYLINDER HEAD LEFT COVER SEAL PACKING	1	
3	210A032	气门盖	VALVA COVER	2	
4	210C074	气门盖密封圈	SEAL FOR INTAKE VALVE	2	
5	D001D021	NGK 火花塞	NGK SPARKING PLUG	1	
6	210-2-6	双头螺栓	DOUBLE -HEAD SCREW	4	
7	210-2-7	盖形螺母	NUT	4	
8	210-2-8	带盘螺栓	PLATE BOLT	4	
9	210-2-9	进气管密封垫	SEAL PACKING FOR THE INTAKE	1	
10	210-2-10	进气管	INTAKE	1	
11	210-2-11	密封垫	SEAL PACKING	1	
12	210-2-12	隔热垫	CARBURETOR SEAL PACKING	1	
13	210-2-13	带盘螺栓	PLATE BOLT	1	
14	210-2-14	带盘螺栓	PLATE BOLT	1	



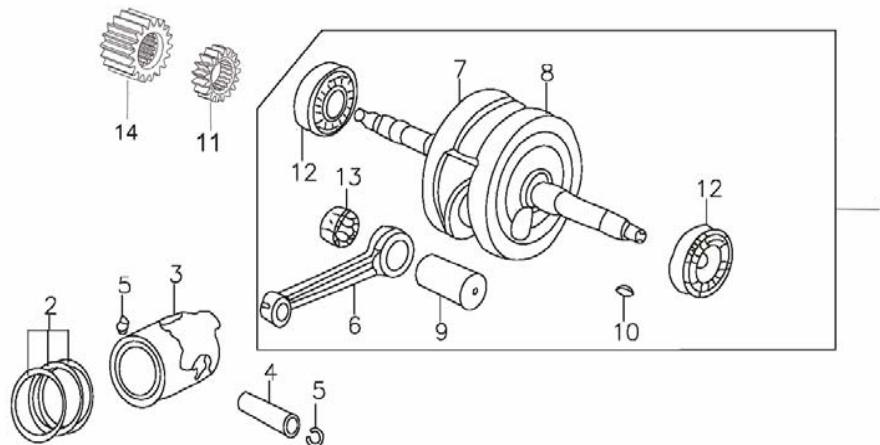
序号 Ref. No.	零部件编码 Part No.	零部件名称	Description	数量 Quantity	备注 Remark
1	210L050	摇臂轴限位板	ROCKERARM SHAFT FENDER	1	
2	210F020	凸轮轴组件	CAMSHAFT SUBASSEMBLY	1	
3	210F015	摇臂轴	ROCKERARM SHAFT	2	
5	210-3-5	螺栓	BOLT	2	
6	210F000	气门摇臂组件	ROCKER ARM, VALVE	2	
7	210-3-7	气门调节螺钉	AIR VALVE ADJUSTING SCREW	2	
8	210-3-8	气门调节螺母	AIR VALVE ADJUSTINF NUT	2	
9	210F034	气门内外弹簧座	UP SPRING SEAT	2	
10	210F033	气门锁夹	AIR VALVE LOCKER	2	
11	210H004	气门内弹簧	INNER SPRING, VALVE	2	
12	210H003	气门外弹簧	OUTER SPRING, VALVE	2	
14	210F045	进气门	INDUCTION VALVE	1	
15	210F039	排气门	EXHAUST VALVE	1	
16	F00C043	挡油罩组件	VALVE STEM SEAL	2	



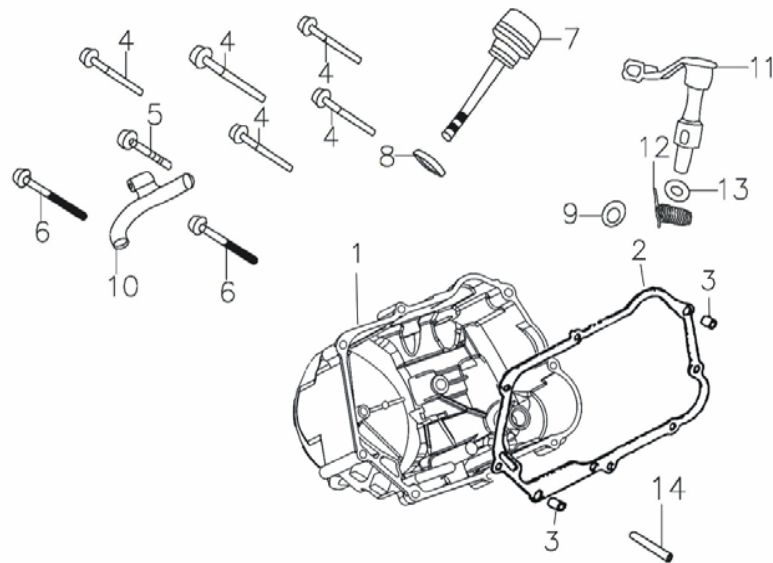
序号 Ref. No.	零部件编码 Part No.	零部件名称	Description	数量 Quantity	备注 Remark
1	210F011	正时从动链轮	TIMING DRIVEN SPROCKET	1	
2	210F012	正时链条	TIMING CHAIN	1	
3	210C006	链条张紧板	TENSION PLATE	1	
4	210C007	链条导向板	GUIDE	1	
5	578306014	六角螺栓M6×14	BOLT M6×14	2	
6	210F014	张紧器组件	CHAIN TENSIONER ASSY	1	
7	210L010	张紧板螺栓	BOLT,TENSION PLATE	1	
8	210-4-8	垫圈8	WASHER 8	1	
9	7006020	内六角螺栓M6×20	BOLT M6×20	2	
10	2101B004	张紧器密封垫	GASKET,TENSIONER	1	
11	210-4-11	O型圈	O-RING	1	
12	210-4-12	调节螺钉	BOLT,ADJUST	1	
13	210-4-13	垫圈8	WASHER 8	1	
14	210-4-14	螺母M8	Nut M8	1	



序号 Ref. No.	零部件编码 Part No.	零部件名称	Description	数量 Quantity	备注 Remark
1	210A020	右曲轴箱体	RIGHT CRANKCASE BODY	1	
2	2101B005	曲轴箱密封垫	CRANKCASE SEALED PACKING	1	
3	210-5-3	左曲轴箱体	LEFT CRANKCASE BOGY	1	
4	210C024	通气管	BREATHING PIPE	1	
5	D00L014	溢流管夹	OVERFLOW PIPE CLIP	1	
6	D00L039	高压线夹	PIPE CLAMPING	1	
7	F08M001	双头螺栓A	CYLINDER TRAPPED STUD(A)	2	
8	F03M002	双头螺栓B	CYLINDER TRAPPED STUD (B)	2	
9	210-5-9	垫圈	WASHER	1	
10	97010014	定位销10×14	ASTEMBLING PIN 10×14	2	
11	210-5-11	放油螺栓	DISCHARGING OIL PLUG SCREW	1	
12	210-5-12	螺栓	BOLT	2	
13	210-5-13	螺栓	BOLT	1	
14	210-5-14	螺栓	BOLT	4	
15	210-5-15	油封	WASHER	1	
16	210-5-16	油封	WASHER	1	

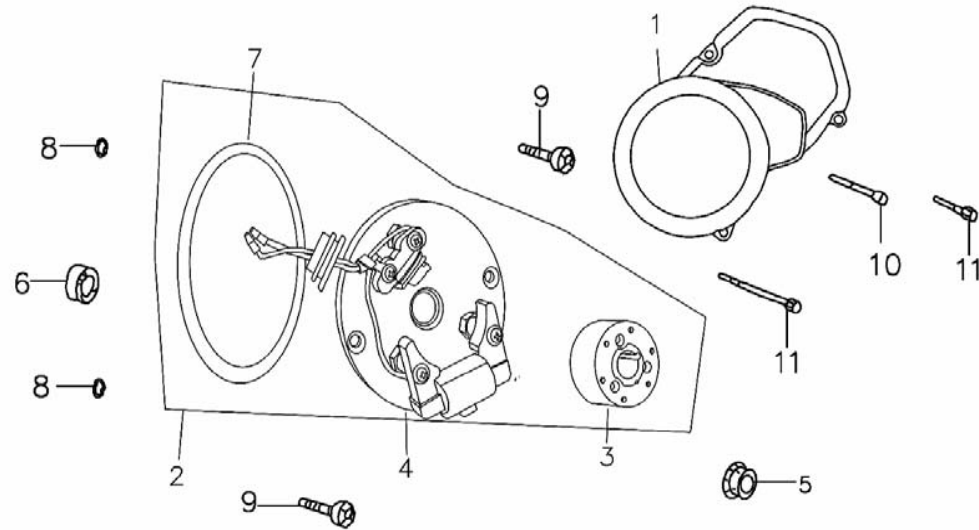


序号 Ref. No.	零部件编码 Part No.	零部件名称	Description	数量 Quantity	备注 Remark
1	2104J000	曲柄连杆总成	CRANK CONNECTING ROD	1	
2	210J013	活塞环组合	PISTON RING SET	1	
3	210J014	活塞	PISTON	1	
4	210J012	活塞销	PISTON PIN	1	
5	D00J011	活塞销挡圈	PISTON PIN SHIELD RING	2	
6	210-6-6	连杆	CONNECTING ROD LEVEL	1	
7	210-6-7	右曲柄	RIGHT-HAND CRANKSHAFT	1	
8	210-6-8	左曲柄	LEFT-HAND CRANK SHAFT	1	
9	210-6-9	曲柄销	CRANK PIN	1	
10	210-6-10	半圆键	SEMICIRCULAR KEY	1	
11	E13E023	油泵驱动齿轮	OIL PUMP DRIVER GEAR	1	
12	210-6-12	轴承63/22	BEARING 63/22	2	
13	210-6-13	连杆大头轴承	BEARING	1	
14	D04K015	主动齿轮	PRIMARY DRIVER GEAR	1	

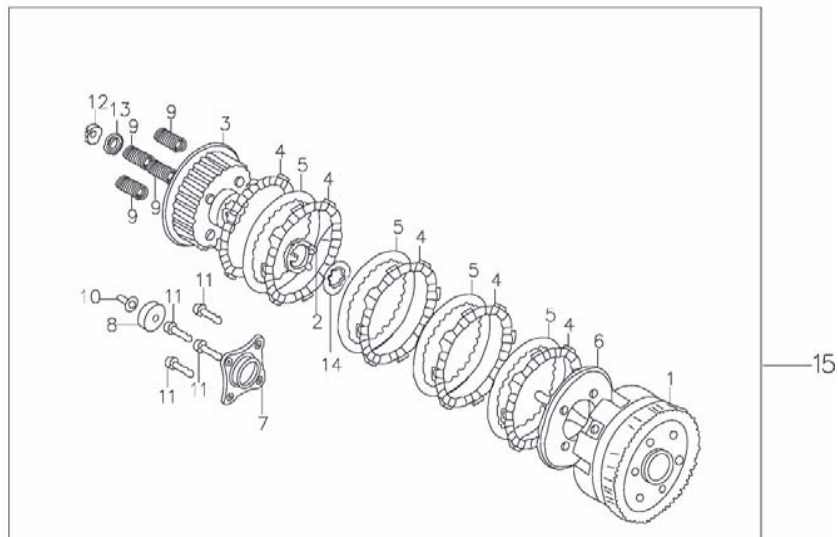


序号 Ref. No.	零部件编码 Part No.	零部件名称	Description	数量 Quantity	备注 Remark
1	2102A034HH2	右曲轴箱盖	RIGHT CRANKCASE COVER	1	
2	2101B002	右曲轴箱盖密封垫	RIGHT CRANKCASE SEALED	1	
3	210-7-3	定位销	PITCHED PIN	2	
4	210-7-4	螺栓	BOLT	5	
5	210-7-5	螺栓	BOLT	1	
6	210-7-6	螺栓	BOLT	2	
7	D00C038	机油标尺组合	OIL SCALE ASSEMBLY	1	
8	D00C060	O型密封圈18×3.5	O-SHAPED SEALED RING (18×3.5)	1	
9	D00C016	油封13.7×24×5	OIL SEAL (13.7×24×5)	1	
10	E13L031	离合器拉索定位支架	CLUTCH CABLE CLIP	1	
11	E13G010BCR	离合器操纵杆	CLUTCH CONTROL LEVER	1	
12	E13H007	操纵杆复位弹簧	CONTROL LEVER RETURN SPRING	1	
13	F04C030	油封12×18×5	OIL SEAL (12×18×5)	1	
14	210-7-14	增油导管	OIL PIPE	1	

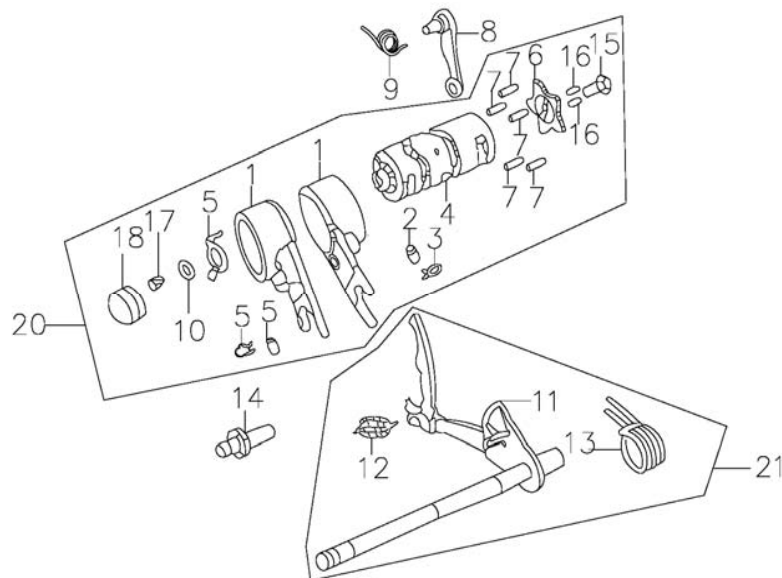
E-8 左曲轴箱盖 磁电机 Left Crankcase Cover & Magneto



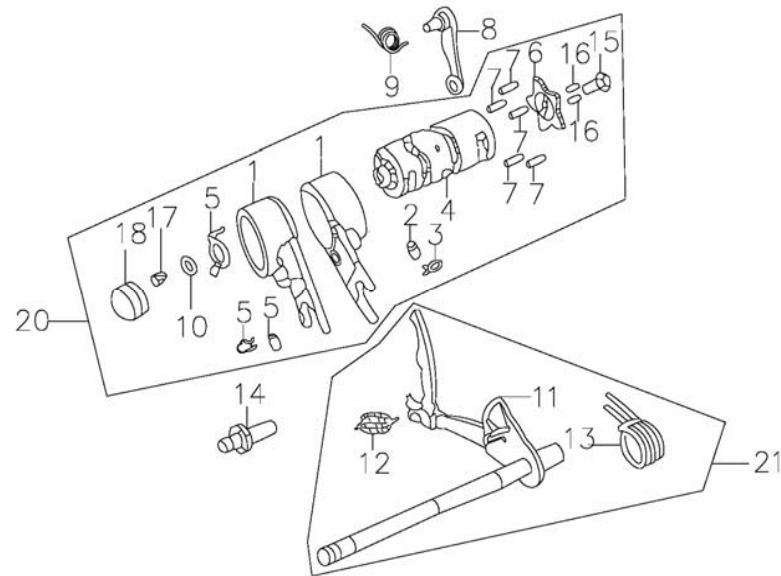
序号 Ref. No.	零部件编码 Part No.	零部件名称	Description	数量 Quantity	备注 Remark
1	210-8-1	左箱盖	LEFT CRANKCASE COVER	1	
2	210-8-2	磁电机总成	MAGNETON	1	
3	A014D060	磁电机转子	FLYWHEEL	1	
4	A0176D070	磁电机定子	STATOR MODULE	1	
5	210-8-5	六角螺母	HEX NUT	1	
6	210-8-6	油封	OILE SEAL	1	
7	210-8-7	O型密封圈	O-SHAPED SEAL	1	
8	210-8-8	O型密封圈	O-SHAPED SEAL	1	
9	81906016	平头螺钉M6×16	BOLT (M6×16)	2	
10	210-8-10	螺栓	BOLT	1	
11	210-8-11	螺栓	BOLT	2	



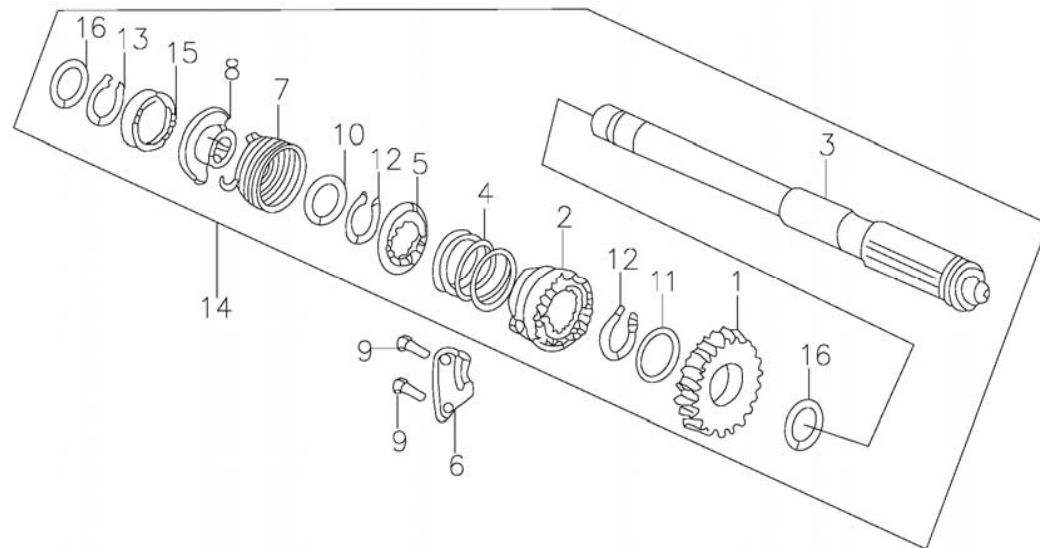
序号 Ref. No.	零部件编码 Part No.	零部件名称	Description	数量 Quantity	备注 Remark
1	210-9-1	离合器外罩组合	CLUTCH EXTERNAL ASSY	1	
2	210-9-2	定位环	HOLDING RING	1	
3	210-9-3	离合器中心套	CENTRE OF CLUTCH COVER	1	
4	210-9-4	离合器摩擦盘	CLUTCH FRICTION DISK	5	
5	210-9-5	离合器板	CLUTCH BOARD	4	
6	210-9-6	离合器压盘	CLUTCH PRESSURE PLATE	1	
7	210-9-7	离合器升板	CLUTCH LIFT SLAB	1	
8	210-9-8	轴承	BEARING	1	
9	210-9-9	离合器弹簧	CLUTCH SPRING	4	
10	210-9-10	离合器推杆	CLUTCH PUSH ROD	1	
11	210-9-11	螺栓	BOLT	4	
12	210-9-12	圆螺母	ROUND NUT	1	
13	210-9-13	碟型垫圈	DISK SHAPED WASHER	1	
14	210-9-14	花键垫圈	SPLINE SHAFT WASHER	1	
15	210-9-15	离合器总成	CLUTCH ASSEMBLY	1	



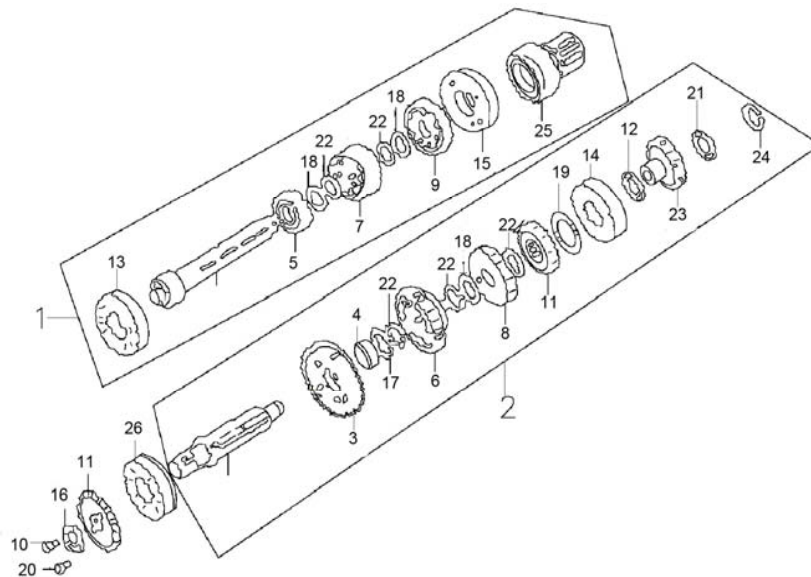
序号 Ref. No.	零部件编码 Part No.	零部件名称	Description	数量 Quantity	备注 Remark
1	210-10-1	齿轮拨叉	GEAR SHIFT FORK	2	
2	210-10-2	导向销	GUIDE PIN	1	
3	210-10-3	弹簧夹	SPRING CLIP	1	
4	210K060	变速鼓	SHIFTING DRUM	1	
5	210-10-5	空档开关接触片	NEUTRAL GEAR SWITCH CONTACT	1	
6	210-10-6	五星板	SPEED VARIATOR STRONGBACSTRONGBACK PIN	1	
7	210-10-7	定位板销钉	STRONGBACK PIN BOLT	5	
8	D05K070	变速鼓定位板组件	SPEED VARIATOR STRONGBACK SUBASSEMBLY	1	
9	D00H009	定位板弹簧	STRONGBACK SPRING	1	
10	210-10-10	垫圈	WASHER	1	
11	208-10-11	变档轴	SHIFTING SUBASSEMBLY	1	
12	208-10-12	弹簧	SPRING	1	
13	208-10-13	复位弹簧	RETURN SPRING	1	
14	D00K024	定位螺栓	ASSEMBLING SPING	1	
15	210-10-15	带盘螺栓	BOLT WITH SALVER	1	
16	210-10-16	定位销	ASSEMBLING PIN	2	



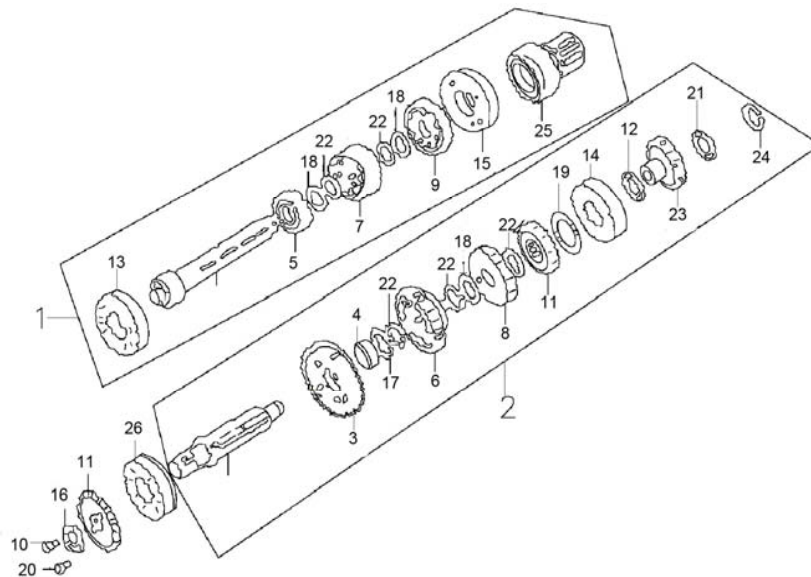
序号 Ref. No.	零部件编码 Part No.	零部件名称	Description	数量 Quantity	备注 Remark
17	210-10-17	开关压板	SWITCH PRESSBOARD	1	
18	210-10-18	动触头组合	MOVING CONTACT SUBASSEMBLY	1	
19	210-10-19	内六角螺栓	SOCKET HEAD CAP SCREW	1	
20	210K060	变速鼓组合	SHIFTING YOKE VARIATOR	1	
21	C03K000	换档臂组件	SHIFTING SUBASSEMBLY	1	



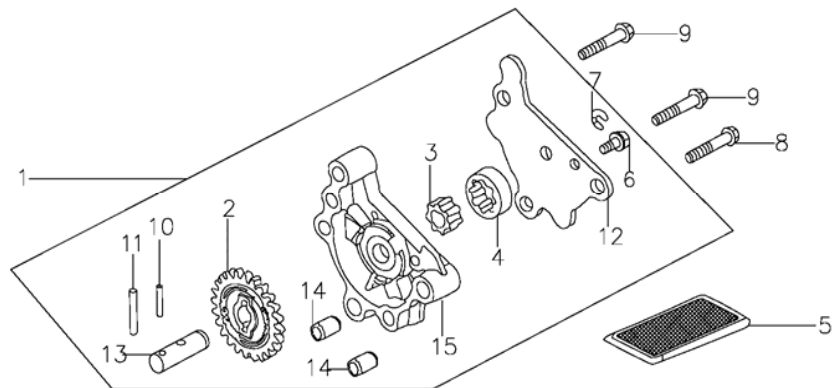
序号 Ref. No.	零部件编码 Part No.	零部件名称	Description	数量 Quantity	备注 Remark
1	210-11-1	起动车轴	START GEAR	1	
2	210-11-2	起动车轴棘轮	STARTING RATCHET WHEEL	1	
3	210-11-3	起动车轴	STARTING SHAFT	1	
4	210-11-4	弹簧	SPRING	1	
5	210-11-5	棘轮弹簧座	RATCHET WHEEL SPRINGS SUPPORTING	1	
6	210-11-6	棘轮导向板	RATCHET WHEEL GUIDE RUNNER	1	
7	210-11-7	起动车轴复位弹簧	STARTING SHAFT RETURN SPRING	1	
8	210-11-8	起动车轴弹簧座	STARTING SHAFT SPRING SUPPORTING	1	
9	210-11-9	螺栓	BOLT	2	
10	210-11-10	垫圈	WASHER	1	
11	210-11-11	垫圈	WASHER	2	
12	210-11-12	垫圈	WASHER	3	
13	210-11-13	护挡圈	SHIELD RING	1	
14	210-11-14	起动车轴组合	STARTING SHAFT ASSEMBLY	1	
15	210-11-15	弹簧盖	SPRING COVER	1	
16	210-11-16	垫圈	WASHER	2	



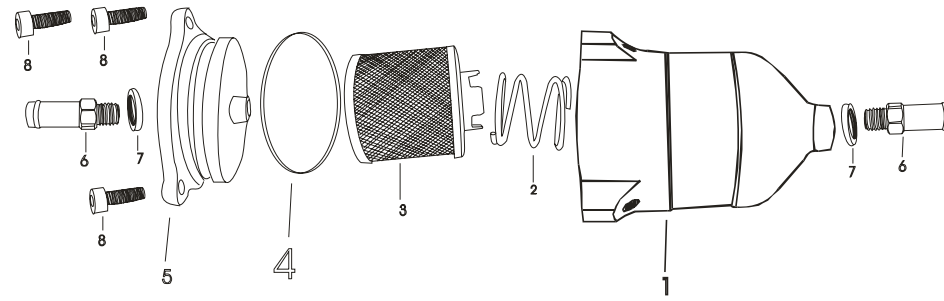
序号 Ref. No.	零部件编码 Part No.	零部件名称	Description	数量 Quantity	备注 Remark
1	E13K030	主轴组件 (不含轴承)	TRANSMISSION MMAIN SHAFT	1	
2	E13K040	副轴组件 (不含轴承)	TRANSMISSION COUNTENSHAFT	1	
3	210-12-3	齿轮	GEAR WHEEL	1	
4	210-12-4	齿轮套	GEARED SLEEVE	1	
5	210-12-5	齿轮	GEAR WHEEL	1	
6	210-12-6	花键从动齿轮	SPLINE SHAFT DRIVER GEAR	1	
7	210-12-7	花键主动齿轮	SPLINE SHAFT MAIN DRIVEN GEAR	1	
8	210-12-8	齿轮	GEAR WHEEL	1	
9	210-12-9	齿轮	GEAR WHEEL	1	
10	210-12-10	花键齿轮	SPLINE SHAFT GEAR WHEEL	1	
11	A009K014	主动链轮	DRIVE SPROCKET	1	
12	210-12-12	主动链轮卡圈	SRIVE SPROCKET CLOSING RING	1	
13	210-12-13	轴承	BEARING	1	
14	276152712	滚针轴承152712	BEARING 152712	1	
15	2766203	轴承6203	BEARING 6203	1	
16	210-12-16	推力垫圈	THRUST WASHER	1	



序号 Ref. No.	零部件编码 Part No.	零部件名称	Description	数量 Quantity	备注 Remark
17	210-12-17	花键垫圈	SPLINE SHAFT WASHER	1	
18	210-12-18	花键垫圈	SPLING SHAFT WASHER	3	
19	210-12-19	花键垫圈	SPLING SHAFT WASHER	2	
20	210-12-20	螺栓	BOLT	2	
21	210-12-21	推力垫圈	SPLING SHAFT WASHER	1	
22	210-12-22	挡圈	SHIELD RING	5	
23	210-12-23	起动过桥齿轮	STAR ROLLING GEAR	1	
24	210-12-24	挡圈 15	SHIELD RING	1	
25	210-12-25	离合器齿轮套	CLITCH GEAR SLEEVE	1	
26	2766303X3	轴承6303X3	BEARING 6303X3	1	



序号 Ref. No.	零部件编码 Part No.	零部件名称	Description	数量 Quantity	备注 Remark
1	210E000	机油泵组件	OIL PUMP COMPONENTS	1	
2	210-13-2	油泵从动齿轮	OIL PUMP DRIVER GEAR	1	
3	210-13-3	油泵内转子	OIL PUMP INNER ROTOR	1	
4	210-13-4	油泵外转子	OIL PUMP OUTER ROTOR	1	
5	D00C037	机油过滤网组件	OIL FILTER SUBASSEMBLY	1	
6	210-13-6	带盘螺栓	PLATE BOLT	1	
7	210-13-7	挡圈	SHIELD RING	1	
8	210-13-8	带盘螺栓	BOLT WITH SALVER	1	
9	210-13-9	带盘螺栓	BOLT WITH SALVER	2	
10	210-13-10	销轴	PIN BEARING	1	
11	210-13-11	销轴	PIN BEARING	1	
12	210-13-12	油泵盖	OIL PUMP COVER	1	
13	210-13-13	油泵轴	OIL PUMP AXIS	1	
14	210-13-14	定位销	ASSEMBLING PIN	2	
15	210-13-15	油泵体	OIL PUMP BODY	1	



序号	零部件编码	零部件名称	Description	Quantiy	备注
Ref. No.	Part No.				
1	219E016	机油清滤器外罩	Oil Filter Hood	1	
2	216H022	机油滤清器弹簧	Oil Filter Spring	1	
3	216E010	机油滤清器总成	Oil Filter Body	1	
4	219C156	O型圈37×2.5	O-ring 37×2.5	1	
5	219E017	机油精滤器端盖	Oil Filter Cover	1	
6	210E031	油冷管螺栓A	Oil Cooler Pipe Bolt A	2	
7	D00L019	铝垫8	Aluminium Washer 8	2	
8	7004012	内六角螺钉M4×12	Screw M4×12	3	